



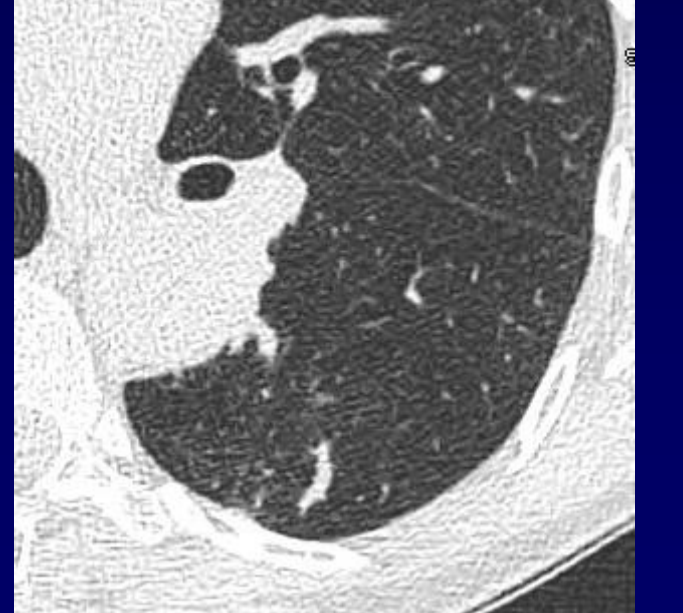
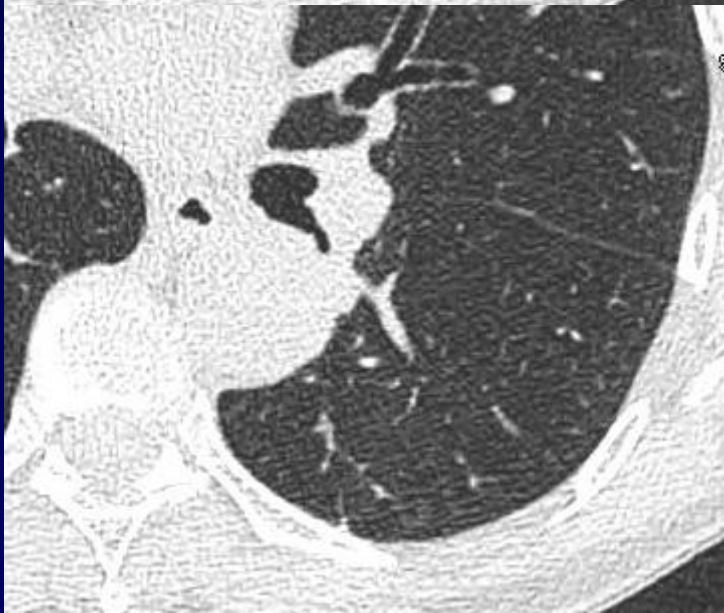
Femme de 55 ans

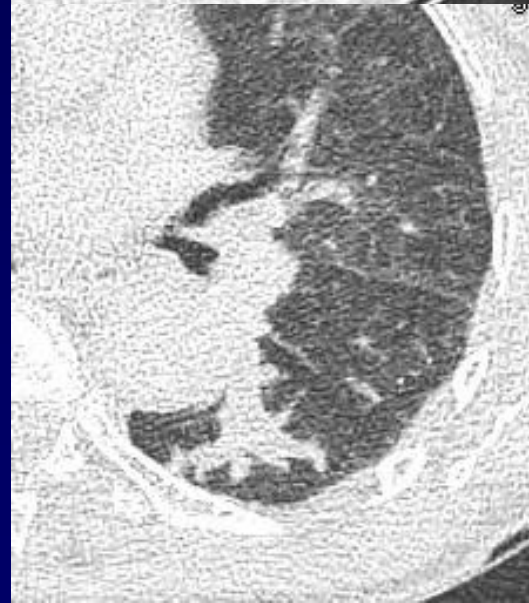
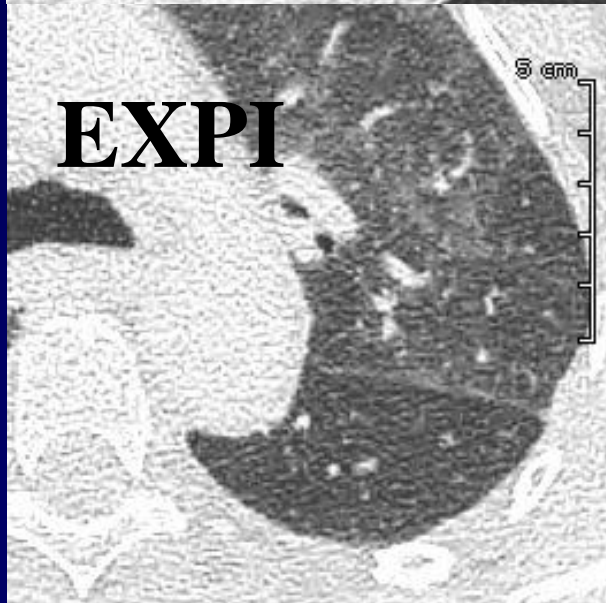
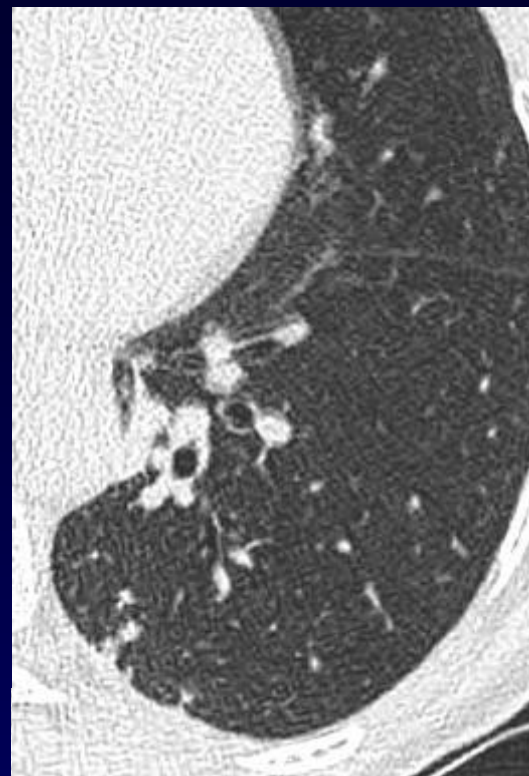
ATCD: RAS

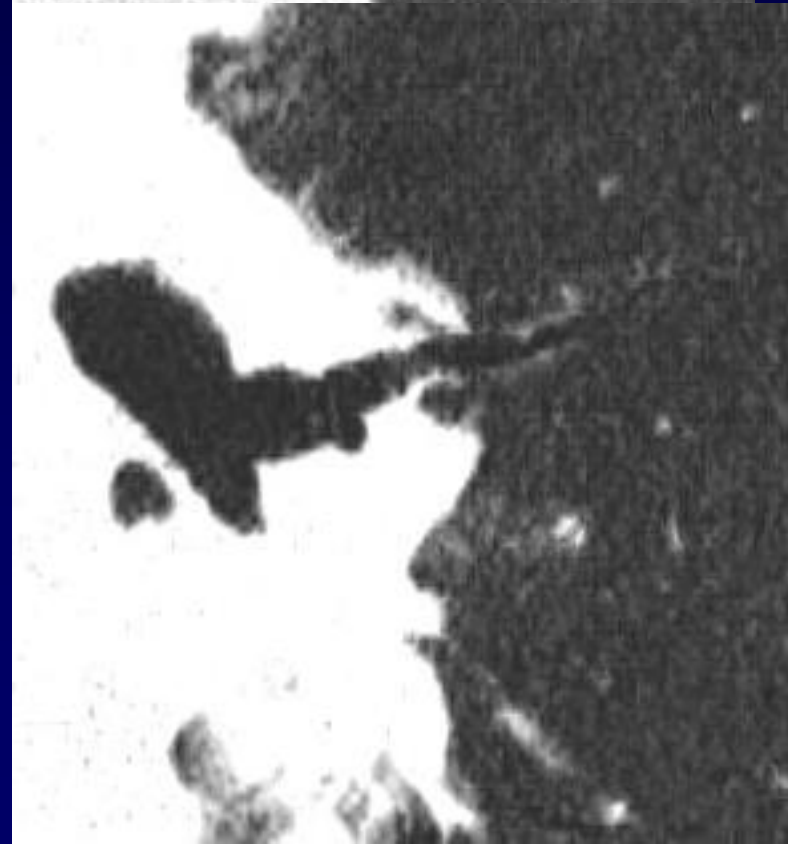
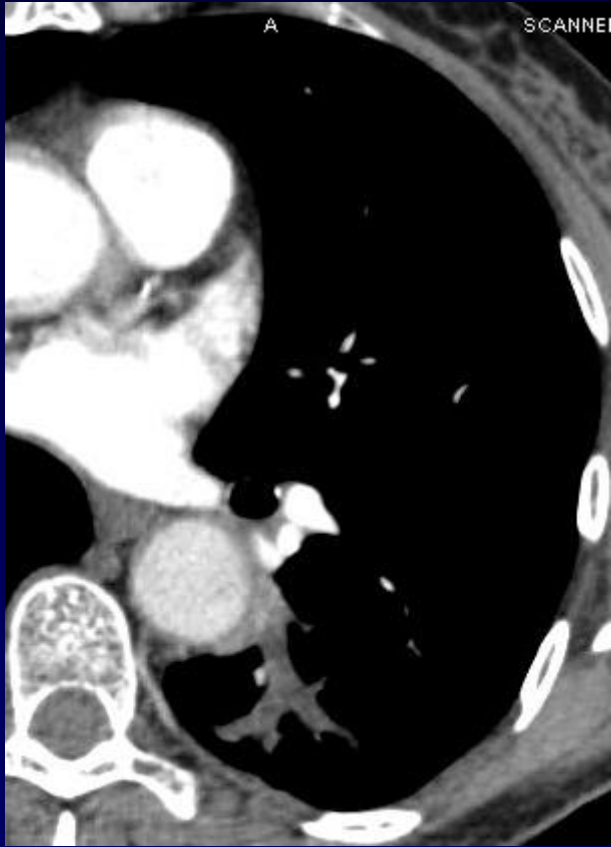
Hémoptysies à répétition de faible abondance

Ex clinique Normal

TDM initial: MAV Nelson G: indication de Vaso - occlusion?

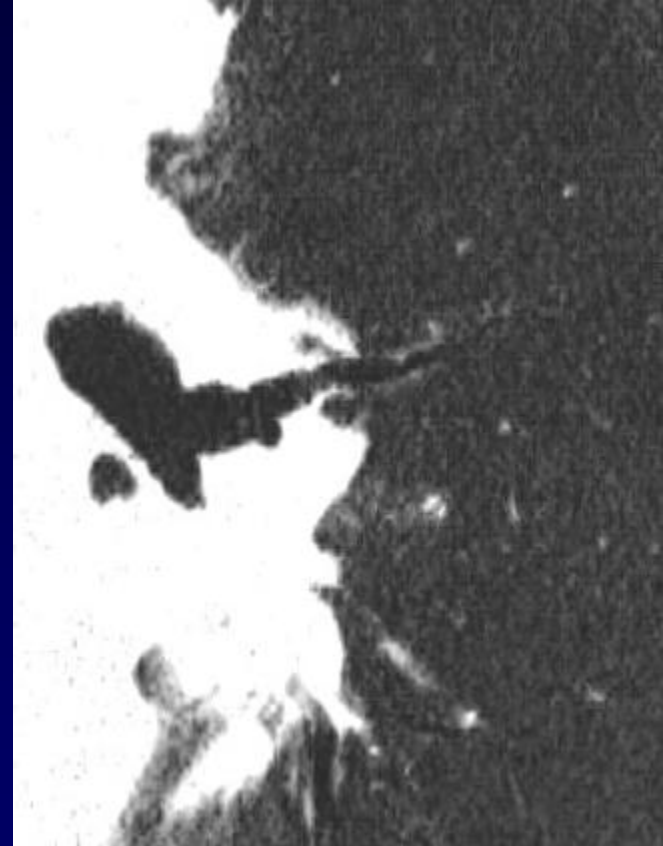
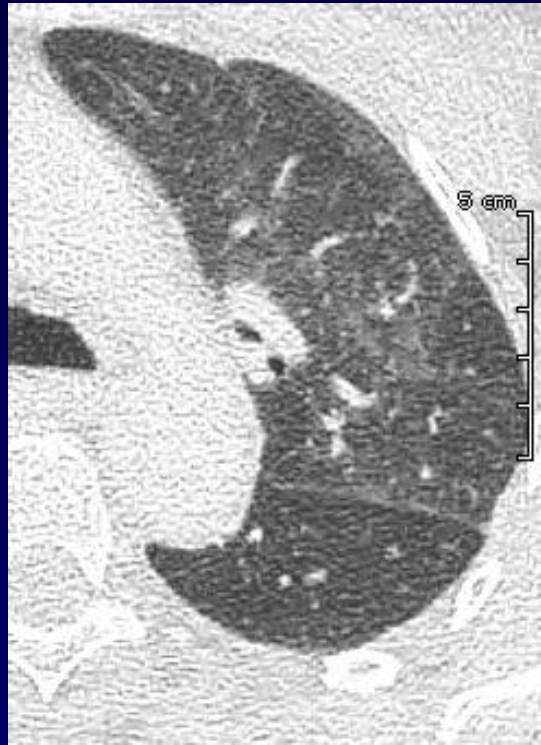
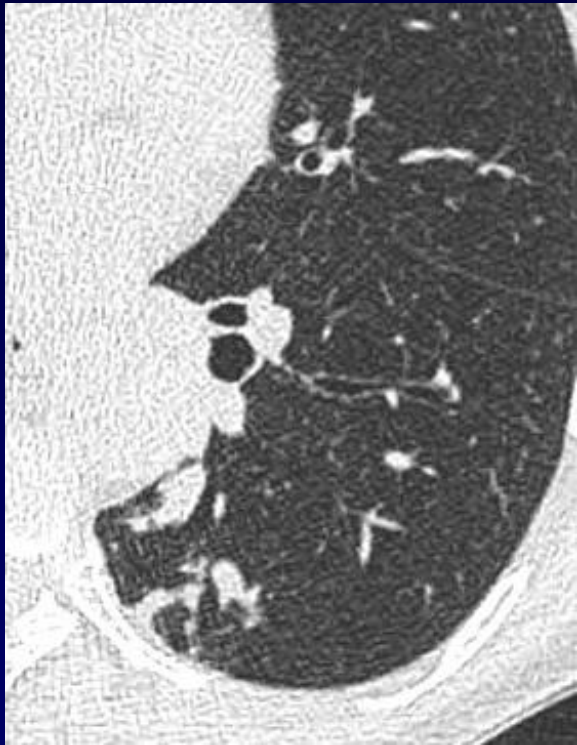








# Diagnostic ?





# **Atrésie sous segmentaire du Nelson G**

## **Sd Hyperaération - Bronchocèle**